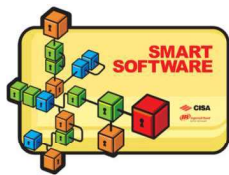


SMART SOFTWARE INSTALLATION AND START-UP

This software package is composed of Microsoft SQL Server and the actual Cisa administration software, Smart Software; both components are required for the package to work. The free Express Edition of Microsoft SQL Server 2008 is included in the distribution.

This manual contains a number of concepts based on the knowledge of the eSIGNO system: for this reason, the previous reading of eSIGNO system user manual is recommended.



SYSTEM REQUIREMENTS

Processor: Minimum 1.4 GHz. Recommended > 2.0 GHz Multi-core
Hard Drive: Minimum 2 GB of available space. Recommended 10 GB
RAM: Minimum 2 GB. Recommended 4-8 GB

Ethernet adapter (only for client-server installations or in combination with Cisa devices with Ethernet connection)

RS-232 DB9 serial port (only in combination with Cisa devices with RS-232 connection)

Display with minimum resolution of 1024 x 768 recommended

Operating System: any of the following versions:

- Windows XP with SP2 (SP3 recommended)
- Windows Vista Home, Premium, Business, Ultimate or Enterprise with SP1
- Windows 7 (32 bit and 64 bit)
- Windows 8 (32 bit and 64 bit)

Notes:

- it is recommended to disable the stand-by/sleep mode on the PC running the software;
- the software's performance strongly depends on the plant's structure;
- an eventual firewall must allow communication between PC and online devices on ports from 10000 to 10240 (UDP protocol).

INSTALL PROCEDURE

1. Run file Setup.exe (on Windows Vista, 7 and 8 run the program as Administrator, by right-clicking on the file and selecting the proper option).
2. Select the desired language and start the installation following the instructions.
3. If necessary, the following components will be installed:
 - Windows Installer 4.5
 - Microsoft.NET Framework 3.5 SP1
 - Microsoft Visual C++ Runtime Libraries 2005
 - Microsoft SQL Express 2008 R2 SP2, in case no database is available on the local computer
 - SAP Crystal Reports

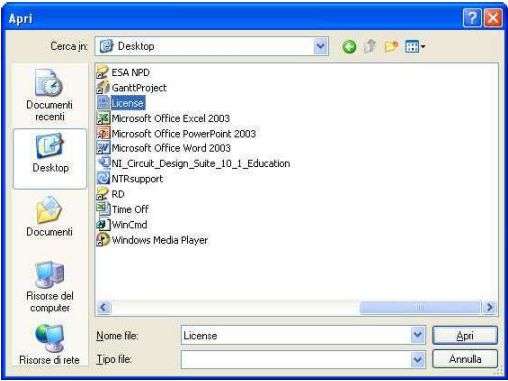
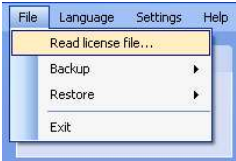
Note for Windows XP users: if necessary, the PowerShell and Crystal Reports installers are available inside the Smart Software's CD
4. Complete the installation following the instructions.
5. When the Smart Software installation ends, restart the PC.

START-UP

LICENSING

The first time the software is used, it is necessary to load the license file provided. The license is an .xml file supplied by CISA Technical Assistance; once received, it must be copied inside the PC on which the Smart Software is installed.

- 1) Click
- 2) Locate the license .xml file on the computer and click Open.



LANGUAGE

To change the software language, click



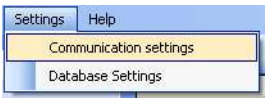
The available languages are:

 English	 Italian	 French
 Spanish	 Catalan	 German

START-UP

COMMUNICATION SETTINGS

1) Click



2) Set the PC type and, if needed, the Client address.

Security: if the Smart Software is installed only on one PC, it is necessary to select the Security option, the default one. The Security PC has all the functionalities.
Client: if the Smart Software is installed on more than one PC, it is necessary to configure all the PCs different from the Security one as Clients. Clients are characterized by progressive addresses (to be set) and have limited functionalities.

PC Type	Client address
Security	0

3) If the Encoder is connected through a Com Port, set it here:

Com Port	None
----------	------

4) Choose the reader/writer type.

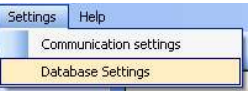
Encoder: a Cisa system encoder (M180, M201 or M305).
Smart Card reader/writer integrated in the PC where the Smart Software is installed.

Cards reader/writer	Encoder
SERVER #00000 Server Encoder	



5) Click  to accept or  to cancel.

DATABASE SETTINGS

1) Click



2) If Microsoft SQL Server 2008 Express is used, leave the default settings.
If a different SQL Server is used, set the connection parameters based on its configuration.

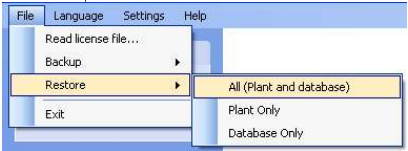
3) Click  to accept or  to cancel.

START-UP

RESTORE

To restore the desired plant on the Smart Software:

1) Click



2) Choose whether to restore the Plant configuration, the Database or both:

Plant file contains static data such as Locks, Zones and Categories.

Database contains information saved while using Smart Software (e.g. about Users).

3) The backup file to be restored is supplied by CISA Technical Assistance Centre and is located on the computer hard drive. Locate the backup plant_name.arj file and click Open.

4) When this message window appears, click Ok. The software closes automatically.



5) Restart the Smart Software by clicking on the desktop icon



LOGIN

1) Check that the plant restored on the Smart Software is the same stored on the Encoder.

2) Click



3) The Encoder will beep and show the message "Read PC. Oper"

4) Place the operator card on the encoder



OPERATOR CARD



5) Type in the operator password:



6) Click

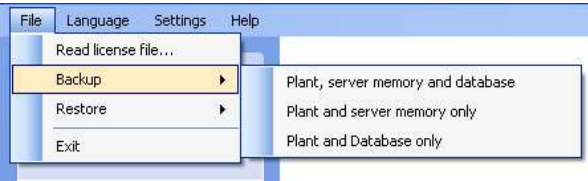


START-UP

BACKUP

To create a backup file of the plant managed with the Smart Software:

1) Click



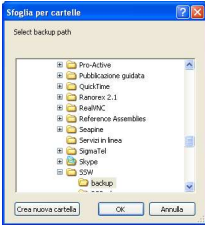
2) Choose the data which must be included in the backup file:

Plant contains the static plant data.

Database contains information saved while using the Smart Software.

Server Memory is the set of information stored in the server's memory.

3) Select the folder where the backup file should be saved and click Ok.



LOGOUT

To log out from the Smart Software, from any screen click



Once the user has logged out, to access the Smart Software again it is necessary to perform the login procedure.

EXIT

To exit from the Smart Software, from any screen click



If the user is logged in, a warning message appears:
















To exit anyway, click Ok

START-UP

MENU SIDE PANEL

The side panel acts as a navigation tool during the use of the Smart Software. It is divided into 4 sections; within each, there is set of functions logically grouped together.

Main views	
 Users	To create and manage users. ¹
 Cards	Card creation and management.
 Access Targets	To visualize locks, zones and beds.
 Access categories	To create and manage Categories (groups of utilities). ²
 Network Monitor	View of the devices currently connected to the network.
Audit Trails	
 Card audit trail	To load card history events from Special Access Control units.
 Lock audit trails	Displays history of lock events stored in the encoder.
 Encoding audit trails	Displays history of encoding events.
Configuration	
 Preferences	To set general parameters.
 Holidays	To manage the access during the year holidays.
 Encoding Parameters	Defines default parameters used when encoding cards.
Commands	
 Logout	To disconnect the operator from the current session.
 Exit	To close the application.

¹ Only if User Descriptions are enabled in the Preferences section.
² Only if any categories have been defined during the plant configuration.